

# Weybridge Gymnastics Club

On Behalf of Weybridge Gymnastics Club we are pleased to welcome your child as a new member.

The aim of the club is to provide a safe, effective and child friendly environment in which the members can participate in gymnastics activities under the guidance of appropriately qualified coaches. We operate an open philosophy and welcome the support of parents and guardians. We also encourage and value parental involvement in the club.

Our Classes are organised into groups according to their age, ability, experience and individual needs. We provide a child centered, coach led program and will endeavor to help your child develop to their optimum level of performance.

Our club uniform is compulsory and can be ordered after a settling in period of 4 weeks. Leotards for the girls and T-shirts for boys.

## Important Info

Managing Director/Welfare Officer – Aibhlin Mcavera

Manager/Head Coach – Leigh Kettles

## Rules

- Please arrive and collect promptly. Arrangements should be made to escort your child to and from their gym sessions (from the building not the car park) if you wish for your child to walk down you must provide us written instructions of this. Unfortunately if you are more than 15 minutes late for your session you will be unable to participate for safety reasons (as you would have missed the warm up).
- Hair must be tied up neatly.
- All jewelry to be removed.

## Club Activities & Fund Raising

Throughout the year we have several focuses, these include:

- Club Championships
- Christmas Display
- Variety of fundraising activities including our Gymathon.

The club has adopted the British Gymnastics policies for child protection; health, safety and welfare, equality and code of conduct and all officials, coaches, members and parents must adhere to these policies.

Occasionally our club photographer or Head Coaches (Leigh and Aibhlin) will take photos/short videos for marketing and training purposes which may be used on our website and social media. By being a member of our club you accept these terms.

Please take a moment to 'Like' us on our Facebook and Instagram page (Move A Muscle), this will allow you to keep up to date with any news or goings on at the club.

Thanks,

*The Weybridge Team*



C/O Flat 8, 18 Lewin Terrace, Bedfont, TW14 8ED

Mob: 07960 568 754

[www.weybridgegymnastics.co.uk](http://www.weybridgegymnastics.co.uk)

[Info@weybridgegymnastics.co.uk](mailto:Info@weybridgegymnastics.co.uk)

# Weybridge Gymnastics Club

## Fees Structure

At Weybridge Gymnastics Club our classes run through all school holidays apart from at Christmas where we stop for 2 weeks. You are credited with 2 weeks to cover any closures out of our control. Therefore, the chargeable amount would be for 48 weeks per year (for 50 weeks of training) divided into 4 equal quarterly payments.

British Gymnastics Membership and insurance and our Club Membership will remain annual so you will still pay this at the same time each year.

The Quarterly payments will be due at the start of:

**January, April, July & October.**

You will receive an invoice 4 weeks before the start of the quarter. If we do not receive your fees before the commencement of the next quarter we will issue you with a £10 Admin fee or you may lose your space.

We hope you will support us in this matter, which will enable the club to continue and grow, offering the best services for all.

Thanks,

*The Weybridge Team*

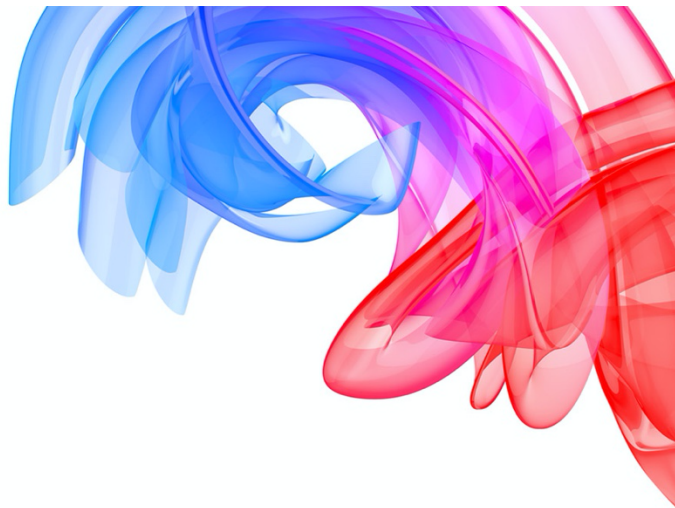


C/O Flat 8, 18 Lewin Terrace, Bedfont, TW14 8ED

Mob: 07960 568 754

[www.veybridgegymnastics.co.uk](http://www.veybridgegymnastics.co.uk)

[Info@veybridgegymnastics.co.uk](mailto:Info@veybridgegymnastics.co.uk)



Dear Member, Parent or Guardian,

For your Annual British Gymnastics Membership, you'll need to register your information directly Via the British Gymnastics website (although you will still make your annual payment with us at your time of renewal).

This process is relatively simple, please note the following instructions.  
On your computer, phone or tablet go to the following address:

[www.british-gymnastics.org/membership](http://www.british-gymnastics.org/membership)

If you are new to the club and haven't had a BG membership number from a previous club, please register as a new member and follow the further instructions.

You'll need to create a Parent account and add your child after.

Weybridge Gymnastics Club should be your primary Club and you need to register your child as participating in general gymnastics.

British Gymnastics will activate your membership and insurance cover immediately as well as sending your membership confirmation and benefits information by both post and email.

British Gymnastics will notify us when you have completed your registration.

Kind Regards,

*The Weybridge Team*